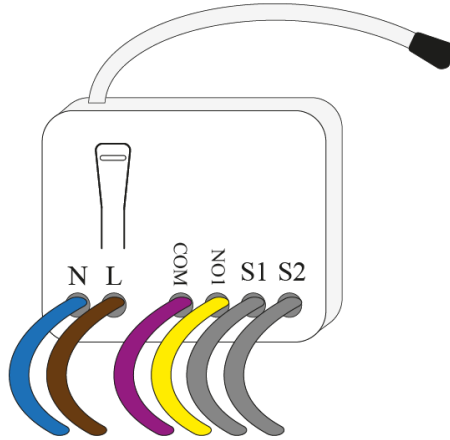


Factory resetting an Electric Relay

When to factory reset an Electric Relay

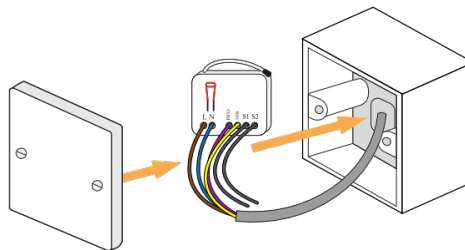
You may need to reset an Electric Relay if you are swapping which Genius Hub the Electric Relay is included onto.



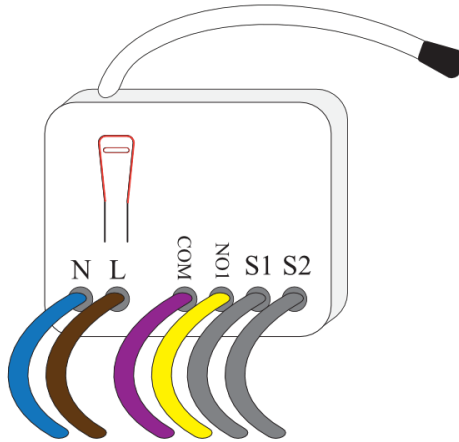
How to factory reset the Electric Relay

To factory reset an Electric Relay:

- Ensure that the Electric Relay is wired in and powered on.



- Press the button on the front 4 times in 1.5 seconds, and hold it on the 4th press until the light turns on and then turns off.



- When the light turns off to remove your finger from the button.
- If you have successfully factory reset the Electric Relay, then when you remove the power to the Electric Relay and power it back on again, then the front button will slowly flash showing that it is not connected to any network.

How to add the Genius Electric Relay to a Genius Hub

The Electric Relay is now in a factory reset to default state, to add it back onto the system again go to the 'Doctor' on the app which is under the 'Main Menu'.

For more information see [this article](#).

- [Positioning Guidelines \(Smart Plugs and Range Extenders\)](#)
- [Transferring Devices over to a new Genius Hub](#)
- [Factory resetting an Electric Switch](#)
- [Technical Documents](#)
- [Adding A New Genius Radiator Valve](#)