

Factory resetting a Genius Radiator Valve

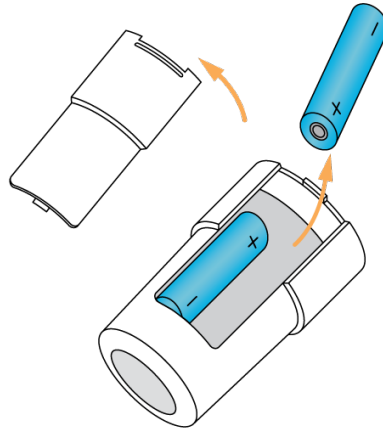
When to factory reset a Genius Radiator Valve

You may need to reset a Genius Radiator Valve if you are swapping which Genius Hub the Genius Radiator Valve is included onto, or if the Genius Radiator Valve will not re-include onto the system.

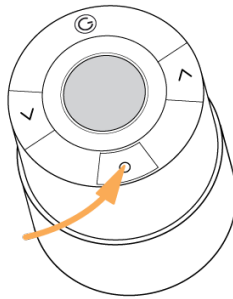
How to factory reset the Genius Radiator Valve

To factory reset a Genius Radiator Valve:

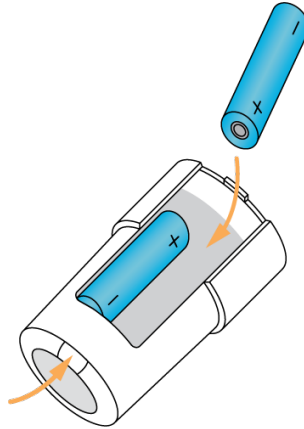
- Remove the battery cover and one battery.



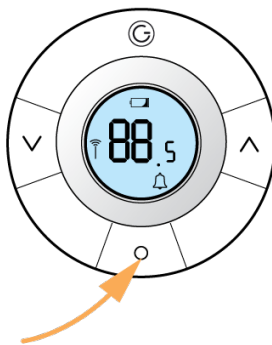
- Press and hold down the middle ('o') button.



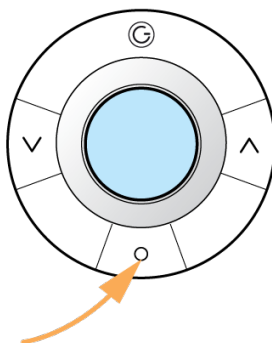
- Re-insert the battery whilst still holding the middle button.



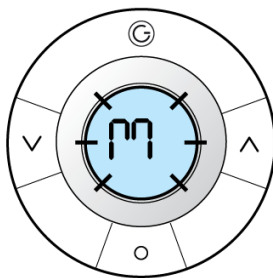
- The valve will perform a screen test and show all the icons.



- Keep the button pressed until the screen goes blank.



- Release the middle button.
- If successful the valve will go into mount mode and 'M' will flash on the screen.



How to add the Genius Radiator Valve to a Genius Hub

The Genius Radiator Valve is now in a factory reset to default state, to add it back onto the system again go to the 'Doctor' on the app which is under the 'Main Menu'.

For more information see [this article](#).

Related Information:

- [How to - Remove and refit the Genius Radiator Valve](#)
- [Is my Genius Radiator Valve working correctly?](#)
- [Genius Radiator Valve responding slowly to change in temperature on the app](#)
- [Transferring Devices over to a new Genius Hub](#)
- [Factory resetting an Electric Switch](#)